

LSCA WEEKLY SHELTER-IN-PLACE PRAYER GUIDE



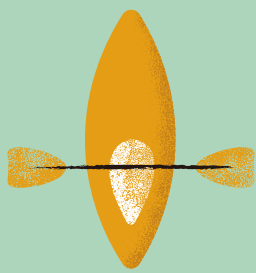
Monday: Campers

So many of our campers have had so many things taken away from them or have had their day to day lives change dramatically. Pray for them to be encouraged, pray for their resiliency amidst so much change, and pray for them to encounter Christ daily and in all things.



Tuesday: Staff

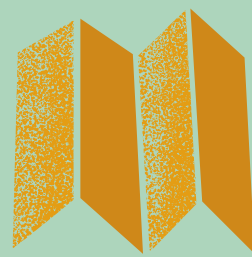
Pray for Kerma, Kennedy, and Kendra as they work hard to keep camp running during this time. Pray for hope and connection to God to be what motivates them daily. Pray for our summer staffers. Pray for them to remain encouraged and confident in God's goodness and provision whatever may happen with summer.



Wednesday: Resources

Pray for our finances. The main sources of revenue for LSCA are through summer registrations, retreats, and our donors.

Pray for our facilities and for this opportunity to be even greater stewards of them. Pray for our grounds and for the volunteers who help us maintain them. In all areas, pray with us for our needs to be met and for willing partners, donors and volunteers to help us meet them.



Thursday: Decision-Making

Pray for the board and for LSCA leadership as we discern if/how to go forward with camp ministry this summer. Pray for the Spirit to be the heartbeat of every conversation.

Pray for peace that passes all understanding. Pray for creativity.



Friday: Summer 2020

We desperately want summer camp to happen. Please pray with us for that to happen.

We know that our God is capable of miracles and we want to be prepared for that to happen here. But we also know that whatever happens, however long we are in this new reality, that God is still good and is still capable of using this ministry. Please pray for all lives to be touched and for camps to encounter Christ however they may interact with LSCA ministry this summer.

Please join us in praying for LSCA weekly!

For more information about Lake Springfield Christian Assembly visit lscacamp.org. If you have any questions you can email them to lscal@lscacamp.org.